

# The Folsom Point



Northern Colorado Chapter / Colorado Archaeological Society



Volume 22, Issue 9

September 2007

## Prehistoric Land Use on St. Charles River

Wednesday, September 19 at 7:00 p.m.  
(Business meeting precedes the program.)  
NOTE DIFFERENT MEETING  
LOCATION THIS MONTH! Poudre Fire Station, 2067 Vermont Drive (off of Timberline Rd between Drake and Horsetooth), Fort Collins (see map).

The program will be *Prehistoric Land Use on the St. Charles River, from Folsom to Historic Utes* presented by CSU graduate student Chaz Evans. The lecture will focus the variety of sites Chaz has recorded on private property with particular attention being given to the Apishapa site structure and architecture in the Arkansas River Basin. The sites recorded this summer were varied from and open air lithic scatters (one of which turned out to be Folsom in age), to rock shelters, corn, perishables, and possible ceremonial centers with associated rock art. Chaz Evans is a nationally recognized professional photographer who has recently changed professions due to the insatiable curiosity about the past. Chaz returned to college after 20+ years in the photo business and received a BA in anthropology from Western State College in 2006. Chaz has worked on the Mountaineer Site, Lindenmeier, Soapstone, and Red Mountain Ranch and is presently a graduate student in anthropology at Colorado State University.

Chaz says his love of the outdoors, photography, geology, and natural

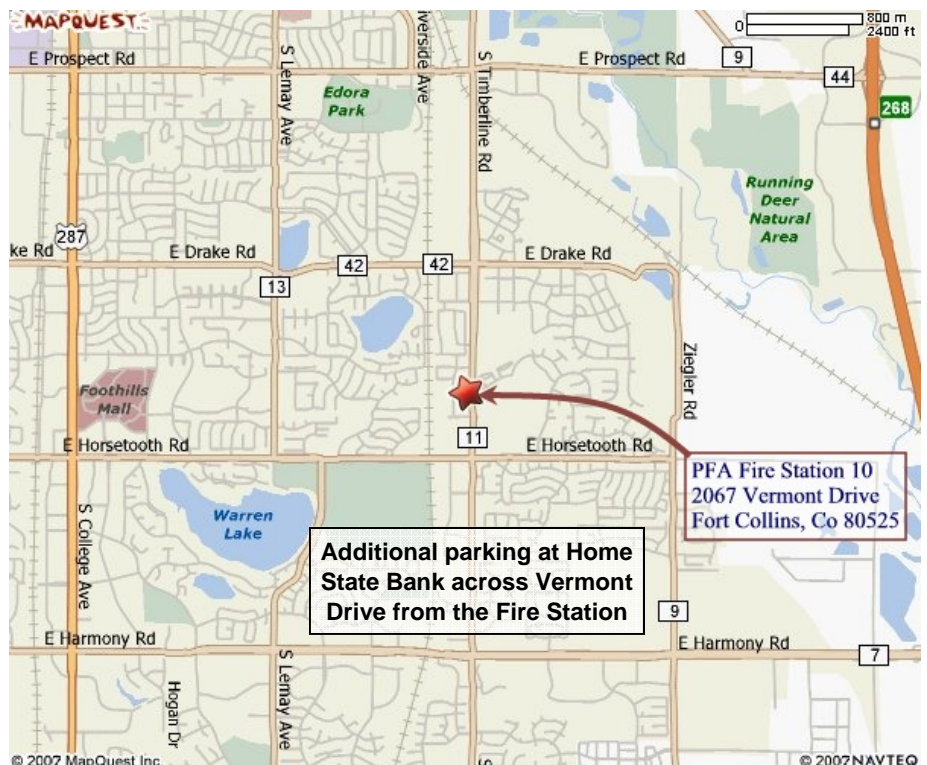
sciences has converged in the study of archaeology and has proven to be a challenging and rewarding line of inquiry. He is deeply passionate about education and preservation of our dwindling inventory of prehistoric resources.

### Welcome New Members!

- Alissa Leavitt-Reynolds and Adam Reynolds
- Kerry McKillop
- Lea N. Pace
- Sam and Jeff Richings-Germain
- Melinda Flugge
- Karl Krahnke

### Special points of interest:

- September 19—Program by Chaz Evans, CSU student.
- September 28-30 CAS Annual Meeting hosted by the Denver Chapter.
- September 29-30 Loveland Stone Age Fair
- October 5-8: Utah Rock Art Research Association, Moab, Utah ([www.utahrockart.org](http://www.utahrockart.org))
- October 10-13: Plains Conference, Rapid City, South Dakota (<http://www.plainsanth2007.org/>)



---

## Pawnee National Grassland Volunteers Needed

---

By Nicole Branton, USFS Archaeologist

This fall I will be hosting a few weekend survey trips to the east side of the Pawnee National Grassland to record historic homesteads. This is a great opportunity to gain some experience with surveying historical sites. One of these homesteads is pretty much a crash course in historical artifacts! The surveys will be conducted about 2-2.5 hrs from Fort Collins.

No prior experience is necessary for volunteers on these surveys, but an interest in historical archaeology is useful.

Participants will need to be able to walk several miles over uneven terrain and bring food/water, wear boots, long pants, hat, sunscreen etc. Transportation may be provided – details are still being worked out. Anyone interested in volunteering should contact:

Nicole Branton  
North Zone Archaeologist  
Arapaho and Roosevelt National Forests  
Pawnee National Grassland  
(970) 295-6611

---

## CAS 2007 Annual Meeting September 28-30

---

The Annual Meeting of the Colorado Archaeological Society will be held on Saturday, the 29th of September, 2007 in the Forum Auditorium of the Fine Arts Building of the Community College of Aurora. In addition to the CAS Annual Meeting, presentations on a wide variety of archaeological subjects will be presented during the day starting at 8:30 AM. A catered banquet will follow the Annual Meeting and be held in the Rotunda of the Student Center of the College.

The Saturday evening banquet speaker will be Dr. Charles A. Reher, University of Wyoming. His talk is titled "High Plains Panorama," and will present a broad perspective on the archaeology of southeast Wyoming, northeast

Colorado and southwest Nebraska, based on 40 years of work in the area. While some recent research will be featured, selected prehistoric and early historic sites will be used to illustrate aspects of regional chronology and cultural ecology, possible ethnic affiliations, lithic source analysis, the research potential of large surface collections, and other topics.

A number of field trips in the Denver area are scheduled for Sunday, the 30th of September.

For more information on the 2007 CAS Annual Meeting, see the summer issue of the CAS Surveyor or visit [www.coloradoarchaeology.org](http://www.coloradoarchaeology.org)

---

## Loveland Stone Age Fair September 29-30

---

The 2007 Loveland Stone Age Fair notes the 75th Anniversary of the Dent mammoth site discovery. Hours are Saturday, September 29 - 9:00 AM to 7:00 PM and Sunday, September 30 - 9:00 AM to 4:00 PM, at the Pulliam Community Building, 545 Cleveland Ave., Loveland, Colorado.

SPEAKERS / EVENTS / DEMONSTRATIONS

**Saturday, September 29**

**Clovis: Man and Mammoth, 1:30 P.M.**

Dr. Steve Holen, Denver Museum of Nature and Science  
Dr. Bob Brunswig, University of Northern Colorado  
Dr. Larry Agenbroad, Hot Springs, SD, Mammoth Site

**Demonstrations**

Bob Patten - Flint Knapping  
Bob Heid - Bead Working

**Sunday, September 30, 1:00 P.M.**

Native American Performance by Danny Many Horses,  
Native American Story Teller & Musician

The organizers remind us that this event is non-commercial – no buying or selling of artifacts is allowed. For more information, visit

[http://www.stoneagefair.com/2007\\_saff/2007\\_stone\\_age\\_fair.htm](http://www.stoneagefair.com/2007_saff/2007_stone_age_fair.htm)

---

## Upcoming Programs and Field Trips

**October Program**— Greenacre Scholarship recipient Robin M. Roberts will present an update on her research on homesteads of the Pawnee National Grassland.

**Field Trips**—Field Trip Coordinator Chrissy Burke is

working on a number of field trip opportunities, including site tours with CSU graduate students Robin Roberts and Erin Parks, and a trip to the Longmont Museum. Stay tuned for details!

## 2008 Calendars Available

The Denver Chapter has available 2008 calendars featuring photographs from their April 2007 Chapter Members' Photo Contest. The photographers whose photos appear in the calendar are Jann Dillon, Larry Evans, Larry Livingston, Bill Tate and Teresa Weedin.

The calendars are \$16 each plus \$2.00 S&H (calendars will be mailed first class in a protective envelope) and can be ordered from Teresa Weedin, 1189 Norfolk St., Aurora, CO 80011. Please make checks payable to Denver Chapter/CAS. If you have any questions, please contact Teresa at [weedin@comcast.net](mailto:weedin@comcast.net) or by phone at 303/366.7843.

Save the \$2.00 S&H by picking up your calendar at the next Denver Chapter meeting, Monday September 10, or at the CAS Annual Meeting at the Community College of Aurora on September 29th.



## CAS/NCC Regular Meeting Location Sought

- *Do you appreciate having the CAS/NCC monthly program meetings?*
- *Do you enjoy the hearing the speakers that come to give presentations for our group?*
- *Do you like to have a place to sit comfortably during the program?*
- *Do you enjoy having enough space for a screen and projector?*

### ***CAS/NCC needs a home!***

We are in need of a location to hold our monthly program meetings on a regular basis. The Delatour Room at the Fort Collins Main Library and the CSU Bone Lab are unavailable, during our meeting times, for the rest of 2007.

If you know of a meeting location that is free or inexpensive, is available on third Wednesday evenings, and can accommodate 20 to 30 people, please contact us!

## PAAC News

By Lucy Burris, CAS/NCC PAAC Coordinator

Summer PAAC Survey: Three NCC-CAS members participated in the 10-day PAAC training survey of Hermit Park Larimer County Open Space in July. The survey covered 350 of the 1,362 acres of the park and recording a total of 9 sites and 9 isolated finds. The materials were mostly historical., only two flakes and two flake fragments were found. The lack of prehistoric evidence in the area is puzzling given known use of nearby areas (Old Man Mountain, Rocky Mountain national Park, etc). Since so few sites were found it is likely that next year's survey will not return to Hermit Park. Watch the newsletter for a spring announcement for next year's survey. If there are more applicants than there are spaces, participants will be selected based on prior PAAC

course completion, particularly "Basic Site Survey Techniques," "Prehistoric Lithic Description," and "Historical Archaeology."

PAAC Programs: The NCC-CAS fall class, "Basic Site Surveying Techniques," is underway with 16 participants. Other classes being taught around the state are listed below. Contact the PAAC Coordinator for the chapter offering each course to register. For more information on any of the courses and to get coordinator information go to the state-wide PAAC web site: <http://coloradohistory-oahp.org/programareas/paac/> (there is also a link on the NCC-CAS web site). Based on group interest last year, the NCC-CAS spring course is tentatively "Colorado Archaeology." A final determination will be made based on a survey at our October or November meeting.

Course	Location	Chapter	Dates	Days
Archaeological Dating Methods	Durango	San Juan Basin	Sept. 15-16	(S,S)
Introduction to Archaeology, CAS, & PAAC	Cortez/Dolores	Hisatsinom	Nov. 3-4	(S,S)
Lithics Description & Analysis	Montrose	Chipeta	Nov. 30, Dec. 1-3	(F,S,S,M)
Lithics Description & Analysis	Boulder	Indian Peaks	Oct. 10, 17, 24, 31, Nov. 7, 14, 28	(W, 7 sessions)
Perishable Materials	Gunnison	CT Hurst	Dec. 7-10	(F,S,S,M)
Principles of Archaeological Excavation	Glenwood Springs	Roaring Fork	Oct. 19-21	(F,S,S)
Principles of Archaeological Excavation	Denver	Denver	Oct. 11,18, Nov. 1, 8, 15, 29, Dec. 6	(TH, 7 sessions)
Rock Art Studies	Alamosa	San Luis Valley	Nov. 9-11	(F,S,S)
Rock Art Studies	Colorado Springs	Pikes Peak	Nov. 16-18	(F,S,S)
Rock Art Studies	Grand Junction	Grand Junction	Oct. 12-14	(F,S,S)
PAAC Laboratory Project	Denver		Dec. *5-22	*Intermittent dates at the Museum Support Center in east Denver; contact Kevin Black for info

---

## *Alice Hamilton Scholarship Fund 2007 Raffle*



*CAS is proud to announce the offering of a*  
***Zuni Squash Blossom Necklace & Earrings***

*A turquoise petit pointe set by Zuni silver artist Eva L. Wyaco*

Dazzle them wherever you go with this exquisite hand-crafted pendant and matching earrings, featuring natural Sleeping Beauty turquoise & sterling silver. Eva's work represents the highest level of Zuni jewelry making. This exquisite petit pointe squash blossom necklace measures 23 inches, and is signed.

This work of art is generously donated by Gayle Andresen, Denver. The appraised value is \$600.

Raffle tickets are sold by CAS Chapters to Members and to the general public as a fund-raising event for CAS's Alice Hamilton Scholarship Fund.

CAS makes annual awards to qualifying Colorado archaeology students.

The raffle drawing will be held at 7:00 pm on September 29, 2007 during the CAS Annual Meeting at Community College of Aurora in Aurora, CO. The winner need not be present to win.

***Raffle ticket prices are \$3 each or 4 for \$10.***

---

## Support the Greenacre Scholarship Fund!

### Recycle Inkjet Cartridges for CAS/NCC

#### Don't Throw Away That Empty Inkjet Cartridge!



Northern Colorado Chapter/CAS has started a recycling and fundraising program with Empties4Cash.com. Here is how it works:

- The empty inkjet cartridges that we usually throw away as trash can be recycled and remanufactured.
- Bring your cartridges to the next CAS/NCC meeting, or contact Bev Goering at 484-3101 or [bgoering@comcast.net](mailto:bgoering@comcast.net). Feel free to pass the word along to anyone with cartridges to recycle!

- Send in your empty cartridges. CAS/NCC gets paid up to \$4.00 for each empty inkjet cartridge that has a print head, regardless of the brand or type.
- Accepted are any inkjet cartridges that have print heads, for all of the following brands of printers:
  - HP
  - Lexmark
  - Xerox
  - Compaq
  - Brother
  - Dell
  - Canon
  - Apple



Note: No Epson print cartridges can be accepted, since they are just ink tanks without a print head.

### Shop Amazon.com and Raise Funds for CAS/NCC

Shop online at Amazon.com and raise funds for the Northern Colorado Chapter of the Colorado Archaeological Society! Your purchase earns dollars for CAS/NCC and doesn't cost you an extra penny! Shop for your favorite items:

*Books – Textbooks –*

*CD's – DVD's –*

*Tools – Outdoor Gear –*

*Gadgets – and Lots More!*

NCC/CAS receives 5% to 15% of your purchase!

#### Important Things to Remember

- Use the links provided on our CAS/NCC website ([www.fortnet.org/casncc](http://www.fortnet.org/casncc)) to make sure CAS/NCC receives a portion of your Amazon.com purchases.
- In order for CAS/NCC to receive proceeds, do not use one-click ordering on the Amazon.com site.



- Visit [www.fortnet.org/casncc/amazon/](http://www.fortnet.org/casncc/amazon/), or click on the amazon.com button on our home page, and choose from three ways to shop:
  1. Earn 15% for CAS/NCC by purchasing one or more of our featured items! (To suggest additional items to feature, contact Joel Hurmence at [jhurmence@hotmail.com](mailto:jhurmence@hotmail.com).)
  2. Earn 5% for CAS/NCC by entering the Amazon.com site through our link.
  3. Earn 5% for CAS/NCC by using the search box provided.

Visit [www.fortnet.org/casncc](http://www.fortnet.org/casncc) and start shopping today!



## Northern Colorado Chapter/CAS Treasurer's Report

September 4, 2007

## Account Balances:

Checking Account	\$1420.88
------------------	-----------

## Includes:

## Kaplan-Hoover:

Interpretative Exhibit	\$521.00
------------------------	----------

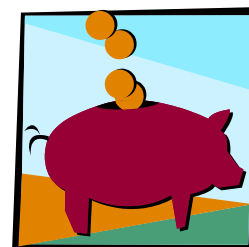
Exhibit Cases	\$ 3.75
---------------	---------

Greenacre Scholarship Fund	\$306.50
----------------------------	----------

Savings Account	\$ 53.65
-----------------	----------

Scudder Money Market Fund	\$1153.87
---------------------------	-----------

Total:	\$2628.40
--------	-----------



## Individual Funds:

General - Checking and Savings	\$ 643.28
--------------------------------	-----------

Less \$ 306.50 in GFS and Kaplan-Hoover funds

Greenacre Scholarship Fund	\$1460.37
----------------------------	-----------

MMF plus \$ 306.50

Kaplan-Hoover	\$ 524.75
---------------	-----------

Total:	\$2628.40
--------	-----------

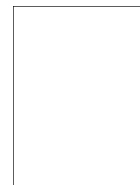
## 2007 Northern Colorado Chapter/CAS Contacts

<b>President</b>	Bev Goering	(970) 484-3101	bgoering@comcast.net
<b>Vice-President</b>	Robin M. Roberts	(970) 631-9668	smiley69@lamar.colostate.edu
<b>Treasurer / Membership</b>	Ron Wemple	(970) 484-3317	rwemple@water-earth.com
<b>Secretary / Librarian</b>	Maryel Lewis	(970) 225-9009	
<b>Education</b>	Mary Jo Zeidler	(970) 224-3609	mjzeidler@comcast.com
<b>PAAC Coordinator</b>	Lucy Burris		lburris@holly.colostate.edu
<b>Field Trips</b>	Chrissina Burke	(517) 449-2001	burkech3@lamar.colostate.edu
<b>Website / Newsletter</b>	Joel Hurmence	(970) 481-2124	jhurmence@hotmail.com
<b>Advisor</b>	Dr. Jason Labelle	(970) 491-5784	jlabelle@lamar.colostate.edu



To Join CAS/NCC or Renew Your Membership, Visit  
[www.fortnet.org/casncc/membership/](http://www.fortnet.org/casncc/membership/)





Northern Colorado Chapter / Colorado Archaeological Society  
Website: [www.fortnet.org/casncc](http://www.fortnet.org/casncc)  
E-mail: [casncc@fortnet.org](mailto:casncc@fortnet.org)  
Newsletter Editor: Joel Hurmence



## Colorado Archaeological Society Code of Ethics

- Members will uphold State and Federal antiquities laws and regulations.
- Excavation of archaeological sites will be conducted only according to professionally accepted procedures developed in consultation with a professional archaeologist and with the written permission of the landowner. The investigator has the responsibility for publication of the results of his/her investigation and for making the collection available for further scientific study.
- Members are encouraged to report archaeological sites to the Office on the State Site Report forms. Materials collected from the surface sites shall be catalogued and described in the site survey report. Collected materials should either be deposited with the State Archaeologist's office or made available for scientific study.
- Members will not support illegal or unscientifically conducted activities by participating in or condoning the sale, exchange or purchase of artifacts obtained from such sites.
- Members who exhibit artifacts will do so in an educational context. Items from burials and objects considered sacred will not be exhibited.
- Members will cooperate with the State Archaeologist and other agencies concerned with archaeology and related fields.
- Members will respect the dignity of groups whose cultural histories are the subject of archaeological investigation.
- Members will not participate in conduct involving dishonesty, deceit, or misrepresentation about archaeological matters.

