

# The Folsom Point



Northern Colorado Chapter / Colorado Archaeological Society



## Saving Skwaasutek: Protecting the Petroglyphs of Coastal Maine

Volume 23, Issue 04

April 2008

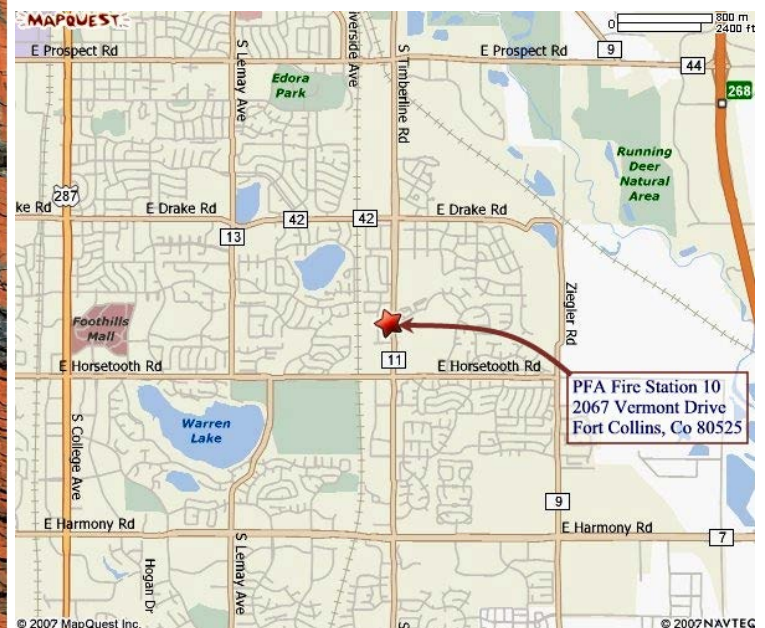
April 16 (Wednesday). Business Meeting and Program. 7:00 p.m. Poudre Fire Station #10, 2067 Vermont Drive (Timberline and Vermont). **Note different meeting location this month.** Dr. Michael Kimball, University of Northern Colorado will present a multi-media presentation.

“Skwaasutek,” a Native American word for “the place of watching and waiting” is home to coastal Maine’s 3,000 year old rock

art. These mysterious designs, or petroglyphs –human, animal, and geometric figures pecked into shale outcrops by the ancestors of today’s Waponaki (People of the Dawn) – are endangered by global warming. As the sea-level rises, these fragile markers of an ancient world are eroding into the sea. Through a unique, cross-cultural collaboration among archaeologists, artists, and Waponaki tribal members, we are documenting the petroglyphs, studying their relations to cultural geography and climate change, and preserving the traditional cultural properties to which they belong. Please join us!

### Special points of interest:

- April 11-13 Colorado Council of Professional Archaeologists Annual Meeting, Fort Collins
- April 12 afternoon CAS Quarterly Board Meeting, Fort Collins (See Page 3)
- April 13 PAAC Class: Intro to Archaeology, CAS, and PAAC (See Page 2)
- May 2-4 Colorado Rock Art Association Annual Conference, La Junta
- June 13-15 CAS Canoe Trip on Gunnison River (See Page 5)
- July 9-16 PAAC Summer Training Survey
- August 15-17 CAS Canoe Trip on Gunnison River (See Page 5)



## Local Passport in Time Project Offered

**Project Name:** Exploring the Old Roach III: Return to Forrester Camp

**Project Dates:** August 4 - 8, 2008

**Description:** From the 1890s to the 1950s, the Roosevelt National Forest was home to tie hacks, men who logged railroad ties for the Union Pacific Railroad. Their camps, which included homes, schools, cookhouses, and even post offices, were small cities within the forest that were abandoned at the end of their timber contracts. Volunteers will help Roosevelt National Forest archaeologists search for and document these "lost cities" in the forest and learn about the lives of tie hacks from the artifacts they left behind.

This season volunteers will record and map the Old Roach and Forrester tie hack camps, guided by historical maps



and oral history gathered from the tie hacks and their families. The project will include site recording, artifact identification, GPS mapping, photography, and limited archaeological survey. Volunteers must be in good health and able to hike at elevations above 8500 feet. Previous archaeological experience is helpful but not required.

**Lodging:** Lodging is available in the FS bunkhouse at Stub Creek. The bunkhouse has a kitchen, bathrooms, and showers. Volunteers are responsible for their own food.

**How to Apply:** Apply through the Passport in Time website: [www.passportintime.com](http://www.passportintime.com). Applications will be due in June.

**For more information:** Contact Nicole Branton, North Zone Archaeologist, Arapaho and Roosevelt National Forests, Pawnee National Grassland, [nbranton@fs.fed.us](mailto:nbranton@fs.fed.us) or 970-295-6611.

## NCC/CAS PAAC News



Our chapter PAAC program for this year wraps up with the "Introduction to Archaeology, CAS, and PAAC" class on April 13. Many thanks to the 29 people who took one or more of the three classes we were able to offer this year. Twenty-two people took at least one class, four people took two, and three people took all three. Two of our classes were filled to capacity. Along with NCC-CAS members, participants included Denver and Indian Peaks CAS members, CSU students, and members of the public from around Northern Colorado. Many thanks also to Dr.

Jason LaBelle, CSU, for allowing us to use the LOPA (Laboratory for Public Archaeology) building for our indoor classroom and to Nicole Branton, USFS, for allowing us to do our survey field work on the Pawnee National grasslands. Our fall 2008 class will be "Colorado Archaeology" with dates and location to be announced later this summer. In the meantime check out the classes that continue to be offered by other chapters (contact their PAAC coordinator to sign up) or look into the PAAC Summer Training Survey (contact Kevin Black to apply).

PAAC Schedule: April – July 2008		
Archaeological Dating Methods	Boulder	Apr 16, 23, 30, May 7, 14
Basic Site Surveying Techniques	Cortez	May 16-19
Colorado Archaeology	Craig	May 30-31, June 1
Historical Archaeology	Grand Junction	Apr 25-27
Introduction to Archaeology, CAS & PAAC	Fort Collins	Apr 13
Introduction to Laboratory Techniques	Glenwood Springs	Apr 19-20
Research Design & Report Writing	Colorado Springs	May 10
Summer Training Survey	Antelope Gulch, Fremont County	July 9-16 (application deadline June 3)†
†For details see <a href="http://www.coloradohistory-oahp.org/programareas/paac/summersurvey2.htm">www.coloradohistory-oahp.org/programareas/paac/summersurvey2.htm</a>		



## **Come join us for the Colorado Archaeological Society Quarterly Board Meeting Fort Collins, Saturday April 12<sup>th</sup>**

**Time:** 3-6 pm, Saturday April 12<sup>th</sup>; meeting will last a maximum of 3 hours

**Place:** Clark Building, Colorado State University campus, Fort Collins

In the interest of attending the CCPA meeting (see below), *there will be no individual committee meetings (other than Alice Hamilton) during the morning.* The typical morning committee meetings will be held over email, between committee members and their committee chair. The afternoon general meeting will cover all normal business conducted during the State CAS board meeting.

The **CCPA (Colorado Council of Professional Archaeology) Meetings** are being held at the Fort Collins Hilton (425 W Prospect Rd) during the same weekend. CAS purposefully arranged this quarterly meeting in Fort Collins to overlap with the CCPAs, in hopes that CAS members would attend the CCPA meeting.

**CCPA General paper sessions** begin on Friday April 11<sup>th</sup> in the early afternoon (1 pm), followed by a banquet later that night. Paper sessions continue all day Saturday, beginning ~8:30 am and ending in the late afternoon of the 12<sup>th</sup>. CAS members are welcome and encouraged to attend the CCPA conference. There is a reduced admission rate for CAS members. You can register at the conference hotel.

### **Directions to CAS General Meeting:**

Exit I-25 at Prospect Road (exit 268), and head west along Prospect Road. After ~4 miles, you will come to College Ave, a major intersection. Make a right (north) on College, while quickly moving to the far left lane. After ~0.25 miles, make a left (west) on W. Pitkin St. After you cross the railroad tracks, you will come to a four way stop. Head straight (west) through the intersection until you come to the end of Pitkin. There, turn right into the parking lot of the Clark Building. There is free parking in the Clark lot all day Saturday. Enter the Clark building on the SE corner of the building (facing the building from the parking lot, this will be the corner on the right), where there will be signs guiding you to the CAS meeting on the 2<sup>nd</sup> floor, on the eastern side of the building.

### **Directions to the CCPA Meeting:**

Exit I-25 at Prospect Road (exit 268), and head west along Prospect Road. After about 4 miles, you will come to College Ave, a major intersection. Continue straight, heading west for ~0.3 miles. On your left (south), you will see the Ft. Collins Hilton Hotel (425 W Prospect Rd). The meetings are being held in the hotel.

### **CAS Informal Dinner:**

CB and Potts, Fort Collins, 6:30 pm, Saturday April 12<sup>th</sup>. We have reserved places for 20 for dinner following the CAS General Meeting on Saturday at a local restaurant. If you have the time, please come and join us for dinner.

---

## Passport in Time Projects

The U.S. Forest Service is offering Passport in Time (PIT) projects for 2008 in Colorado. For more information, visit <http://www.passportintime.com/>

### Picketwire Canyonlands Site Survey XIV

Comanche National Grasslands,  
(CO-3720)

**Dates:** June 1-7, 2008 (including weekends). Must commit to 3 days

Tired of the city and want to get away? Then join us! Picketwire Canyonlands is a spectacularly remote and rugged area containing a great density and variety of cultural sites. We are recruiting volunteers to help us search the canyon for traces of past cultures and to assist in preparing the detailed records of what is discovered. Among the prehistoric resources expected are complex village sites dating to AD 800-1500, camps used by antecedents of modern tribes, and enigmatic rock art dating to all periods. We also anticipate Hispanic pioneer homesteads of the 19th century and the remnants of historic cattle ranches. PIT volunteers will help us explore the canyon and aid in the specialized tasks that are required including photography, botany, site mapping, and rock art recording. Please join us for our fourteenth year in the canyon!



**Number of openings:** 8-10

**Special skills:** Must be familiar and experienced with back-country or wilderness settings; must be in good health and able to hike over steep and rough terrain in hot weather at high elevations for a full workday; experience in photography, botany, geology, stone tool identification, and rock art recording, helpful but not required

**Minimum age:** 18 years old

**Facilities:** Access to this area is restricted, no commercial lodging is available; Forest Service will provide bunkhouse facilities with kitchen, shower, and toilets; space for tents and small campers; participants responsible for food and drinking water, dinners are optional "family" affairs

**Nearest towns:** La Junta, 35 miles; Pueblo, 80 miles

**Applications due:** March 30, 2008

### Monarch Lake Survey

Arapaho-Roosevelt NF  
(CO-3752)

**Dates:** July 20-26, 2008 (Sunday-Saturday). Must commit to full session

In 1904, Colorado investors rallied Japanese and Bulgarian laborers to construct a dam in a picturesque open valley, creating Monarch Lake. One of the first business ventures sparked by the incursion of the Moffat Railroad into the Middle Park of Colorado, Monarch Lake was built for the logging of the surrounding mountains to support the nearby fledgling town of Monarch. Although the town crumbled in 1909, the lake remained a focal point of recreational activities thereafter. Come join us for a survey to locate and record historical features related to the Monarch Lake construction camp, its original logging use, and anything else that marks the subsequent decades of occupation and recreation. Although some cabin ruins are rumored to be located just inside the Indian Peaks Wilderness boundary (on the lake's east side), it is uncertain if these cabins are in fact related to the original construction camp or if they hold any special clues as to the ethnic identity of their former occupants. We will spend five days surveying the valley around the lake to locate and record historical sites (or prehistoric sites, as the case may be). So be the first to help explore the historical resources along the periphery of man-made yet indescribably beautiful lake.

**Number of openings:** 8

**Special skills:** Must be in good health, able to hike all day, at high elevation in the heat over steep, rough terrain; experience recording archaeological sites helpful but not required

**Minimum age:** 18 years old

**Facilities:** Forest Service will provide camping spaces at Arapaho Bay Campground, vault toilets, potable water, no showers or electricity; volunteers responsible for personal camping equipment and food; motels, grocery, and restaurants in Grandby and surrounding

**Nearest towns:** Grandby, 14 miles

**Applications due:** May 18, 2008

**"ROCK ART ALONG THE ARKANSAS RIVER: COLORADO'S SOUTHEAST"**

**The Colorado Rock Art Association (CRAA) Symposium 2008 will convene in La Junta, Colorado at the Koshare Kiva and Museum May 2-4, 2008.**

Visit <http://www.coloradorockart.org/>



## Another CAS Canoe Trip August 15-17, 2008

The Colorado Archaeological Society is pleased to offer a new travel experience for its membership. The CAS canoe trip scheduled for June 13-15 is full! Because of the response from members wanting to sign up, **we have scheduled a second trip on the same river, on August 15-17, 2008.** Join us for this three-day trip to enjoy the water and archaeology of western Colorado.



### The Lower Gunnison River

This leisurely 31-mile trip through the Escalante and Dominguez Canyons is a summer delight, leaving time for hiking and photography. The Gunnison is ideal for beginning and intermediate canoeists, providing lots of fun with various Class 1+ rapids along its course. You will paddle beside high walls of beautiful red sandstone and shale, deposited during the age of the dinosaurs. Interesting side trips into deep box canyons will leave you awed by the immensity of geologic time and the

silence of the wilderness. Massive cottonwood trees stand on the river bends supporting huge nests of blue herons, hawks and eagles. Hiking will include the spectacular Dominguez Canyon Wilderness Study Area complete with a 40-foot waterfall, secluded swimming holes and numerous ancient Indian petroglyphs.

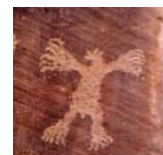
### How to Sign Up

Centennial Canoe Outfitters

([www.centennialcanoe.com](http://www.centennialcanoe.com)) will provide all

safety equipment, river guides, canoes and great food.

**Cost of the trip is \$300 (\$260 for children ages 6-12),** of which \$50 is donated back to CAS for the Alice Hamilton Scholarship Fund. You will need to bring a sleeping bag, tent and basic personal supplies. The trip is limited to 24 participants, so sign up early to reserve your place. A deposit of \$100 per person must accompany your reservation request (Visa and Mastercard accepted), and the balance is due by July 15. **For further details and to register for the trip, contact Centennial Canoe Outfitters, 1-877-353-1850 (toll free)** and tell them you heard about it from Colorado Archaeological Society.



## Recycle Inkjet Cartridges for CAS/NCC

### Don't Throw Away That Empty Inkjet Cartridge!



Northern Colorado Chapter/CAS has started a recycling and fundraising program with Empties4Cash.com. Here is how it works:

- The empty inkjet cartridges that we usually throw away as trash can be recycled and remanufactured.
- Bring your cartridges to the next CAS/NCC meeting, or contact Bev Goering at 484-3101 or [bgoering@comcast.net](mailto:bgoering@comcast.net). Feel free to pass the word along to anyone with cartridges to recycle!

- Send in your empty cartridges. CAS/NCC gets paid up to \$4.00 for each empty inkjet cartridge that has a print head, regardless of the brand or type.
- **Empties for Cash now accepts Epson ink cartridges!** Accepted are any of the following brands of printers:

- Epson
- HP
- Lexmark
- Xerox
- Compaq
- Brother
- Dell
- Canon
- Apple



## Fort Lupton Heritage Fair May 3



### Second Annual Heritage Fair At Historic Fort Lupton Park

May 3, 2008 9:00 - 5:00

Admission is free! Some activities may have a fee.

This show is for families, history buffs, and living history actors.

See historic demonstrations from weavers, spinners, blacksmiths and other historic crafts.

See and talk to mountain men, characters from the colonial period, revolutionary war, and Civil War, early western explorers, buffalo soldiers, and other living history actors.

Be entertained by bagpipers, traditional singers, dancers, and other musicians and entertainers.

Visit an 1830's fur trading fort site, an 1860's farm house and a 1870's one-room school.

Shoot a black powder rifle, throw a tomahawk, and participate in other craft and skills demonstrations. Learn

about history in a fun and exciting way.

Enjoy refreshments and foods of the past, available on site.

For more information, contact [TRT@spvhs.org](mailto:TRT@spvhs.org) or 303-857-4474.

Fort Site & Black Powder Shooting Range  
South Platte River  
Weld County Road 14 1/2 and  
3/4 mile west of Highway 85

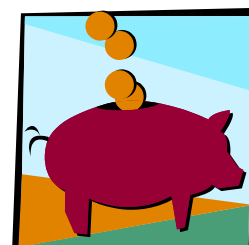


## Northern Colorado Chapter/CAS Treasurer's Report

April 2, 2008

### Account Balances:

Checking Account	\$1539.97
Includes:	
Kaplan-Hoover:	
Interpretative Exhibit	\$879.08
Exhibit Cases	\$ 3.75
Greenacre Scholarship Fund	\$401.00
Savings Account	\$ 53.75
Scudder Money Market Fund	\$1185.87
Total:	\$2779.59



### Individual Funds:

General - Checking and Savings	\$ 309.89
Less \$ 401.00 in GFS and Kaplan-Hoover funds	
Greenacre Scholarship Fund	\$1586.87
MMF plus \$ 401.00	
Kaplan-Hoover	\$ 882.83
Total:	\$2779.59

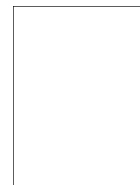
## 2007 Northern Colorado Chapter/CAS Contacts

<b>President</b>	Bev Goering	(970) 484-3101	bgoering@comcast.net
<b>Vice-President</b>	Robin M. Roberts	(970) 631-9668	rmroberts1@gmail.com
<b>Treasurer / Membership</b>	Ron Wemple	(970) 484-3317	rwemple@water-earth.com
<b>Secretary / Librarian</b>	Chrissina Burke	(517) 449-2001	burkech3@gmail.com
<b>Education</b>	Mary Jo Zeidler	(970) 224-3609	mjzeidler@comcast.com
<b>PAAC Coordinator</b>	Lucy Burris		lburris@holly.colostate.edu
<b>Field Trips</b>	Abe Thompson	(517) 449-2001	abekvale@gmail.com
<b>Website / Newsletter</b>	Joel Hurmence	(970) 481-2124	jhurmence@hotmail.com
<b>Advisor</b>	Dr. Jason LaBelle	(970) 491-5784	jason.labelle@colostate.edu



To Join CAS/NCC or Renew Your Membership, Visit  
[www.fortnet.org/casncc/membership/](http://www.fortnet.org/casncc/membership/)





Northern Colorado Chapter / Colorado Archaeological Society  
Website: [www.fortnet.org/casncc](http://www.fortnet.org/casncc)  
E-mail: [casncc@fortnet.org](mailto:casncc@fortnet.org)  
Newsletter Editor: Joel Hurmence



## Colorado Archaeological Society Code of Ethics

- Members will uphold State and Federal antiquities laws and regulations.
- Excavation of archaeological sites will be conducted only according to professionally accepted procedures developed in consultation with a professional archaeologist and with the written permission of the landowner. The investigator has the responsibility for publication of the results of his/her investigation and for making the collection available for further scientific study.
- Members are encouraged to report archaeological sites to the Office on the State Site Report forms. Materials collected from the surface sites shall be catalogued and described in the site survey report. Collected materials should either be deposited with the State Archaeologist's office or made available for scientific study.
- Members will not support illegal or unscientifically conducted activities by participating in or condoning the sale, exchange or purchase of artifacts obtained from such sites.
- Members who exhibit artifacts will do so in an educational context. Items from burials and objects considered sacred will not be exhibited.
- Members will cooperate with the State Archaeologist and other agencies concerned with archaeology and related fields.
- Members will respect the dignity of groups whose cultural histories are the subject of archaeological investigation.
- Members will not participate in conduct involving dishonesty, deceit, or misrepresentation about archaeological matters.

