
The Folsom Point



Northern Colorado Chapter / Colorado Archaeological Society



Volume 24, Issue 05

May 2009

Research Update: Homesteads on the PNG

April 15 (Wednesday) - Social Time, Business Meeting and Program. Dinner is at 5:30 p.m. and program is at 7:00 p.m. at Pappy's Corner Pub, 1027 W. Horsetooth Rd, Fort Collins. This month's program is Research Update: Locating and Recording Homesteads on the Pawnee National Grassland by Robin M. Roberts, Zone Archaeologist on the Routt National Forest for the Hahn's Peak, Bears Ear and Yampa Ranger Districts. This presentation will discuss updated results on her thesis research project which focuses on locating and recording homesteads on the Pawnee



presentation will discuss the results of using a GIS predictive model that was created for this project to aid in locating homestead remains. Robin is a past recipient of the CAS Alice Hamilton Scholarship and two time recipient of the CAS/NCC Greenacre Scholarship. She is presently finishing up her masters degree at CSU. This program is free and open to the public. Join us!



National Grassland. (PNG) This update will include previous fieldwork results that were presented during the October 2007 NCC/CAS meeting as well as results from a field project completed during the summer of 2006. The presentation will emphasize and show the importance of utilizing all available resources when "doing" historical archaeology and highlight the various resources used during this project. The significance of each resource will be discussed and how each resource impacted the interpretation of the archaeological record. Lastly, the



Reminder:

The Folsom Point and CAS/NCC Programs take the summer off! Watch your email for special announcements. Look for us in September.

Special points of interest:

- May 11—Berthoud Senior Center, Mariano Medina, a Legend in His Own Time
- May 15-17—CRAA Annual Symposium, Cortez (Page 5)
- May 20—CAS/NCC Program by Robin Roberts, Pappy's Corner Pub
- May 22-25—An Archaeologists Tour of Mesa Verde (P. 5)
- May 29—Loveland Historical Society, Mariano Medina, a Legend in His Own Time
- June 12-14—CAS Canoe Trip on the Colorado River
- June 16-23—PAAC Summer Training Survey
- July 25—CAS Quarterly Meeting, Durango
- August 18 - 22 Oregon-California Trails Association Convention (OCTA), Loveland
- October 2-4—CAS Annual Meeting in Pueblo, hosted by Pueblo Archaeological and Historical Society
- October 8-10—Ninth Biennial Rocky Mountain Anthropological Conference, Gunnison.



Welcome New Member!

- Rae Todd

PAAC News



Submitted by Bruce Wahle

The spring 2009 PAAC class, Principles of Archaeological Excavation, ended May 5. We would like to thank LesLee Ann Heusinkveld for a cash donation to the class, and Don Piermattei for the classroom space.

The top topics voted on for the fall 2009 class are:

1. Field and Laboratory Photography

2. Rock Art Studies

3. Historical Archaeology/Prehistoric Lithic Description and Analysis (tie)

Given these choices, Kevin Black has decided to offer the **Field and Lab Photography** course on five consecutive Tuesday sessions September 8 through October 6, 2009.

The NCCAS is still looking to fill the PAAC Coordinator position.

Class	Location	Dates
Field and Laboratory Photography	Craig	June 6-7 S/S
Perishable Materials	Grand Junction	May 15-17 F/S/S
Prehistoric Lithics Description & Analysis	Colorado Springs	May 8-10 F/S/S
Summer Training Survey	Antelope Gulch	Jun *16-23

* Sign up with Kevin Black by May 4, 2009 .

News Briefs

Submitted by Bruce Wahle

- Interpretations of Colorado Clovis Cache Continue to Evolve:** In the University of Colorado press release, Yohe says the discovery of the protein residue caused the investigators to change their minds about the purpose of the cache. Initially, they suspected it was a ritual deposit, but because some of the tools had been used, they decided it was a utilitarian cache. According to Bamforth, some ancient hunter buried the items, "fully expecting to come back at a later date and retrieve them." It's certainly possible that the artifacts represent this kind of cache, but I think it's premature to discard the idea that the artifacts are the remains of an Ice Age ceremony.
<http://www.cdarc.org/page/6dwk> - *Columbus Dispatch*
- Frommer's 500 Places to See Before They Disappear, 1st Edition** Learn about and plan a visit to see rare cultural, historic, and natural places before they are irrevocably altered or even gone forever.
<http://www.frommers.com/bookstore/047018986X.html>
<http://www.wanderingeducators.com/travel-guides/frommers/book-review-frommers-500-places-see-they-disappear.html>
- Genetic Data on Ancient American Populations Points to Single Ancestral Group:** For two decades, researchers have been using a growing volume of genetic data to debate whether ancestors of Native Americans emigrated to the New World in one wave or successive waves, or from one ancestral Asian population or a number of different populations. Now, after painstakingly comparing DNA samples from people in dozens of modern-day Native American and Eurasian groups, an international team of scientists thinks it can put the matter to rest: virtually without exception, the new evidence supports the single ancestral population theory.
<http://www.sciencedaily.com/releases/2009/04/090428223836.htm>
- New Book Explores Links Between Rock Art, Shamanism, and Science.** David S Whitley is clearly a man who has moved at the centre of prehistoric archaeology for decades. In *Cave Paintings and the Human Spirit* he takes us into that world: roughly half of the book is an account of the archaeological debates, quarrels and missteps that have marked the exploration and attempts at explanation of the cave art of prehistoric Europe and associated genres. On that he's entertaining, anecdotal, and so far as I can tell a faithful guide.
<http://blogcritics.org/books/article/book-review-cave-paintings-and-the/>

Loveland – Berthoud: Trails Across the Thompson Valleys

A Description of Tour “D” of the Oregon – California Trails Association 2009 Convention, August 18-22 in Loveland.

By Sharon Danhauer

Pioneer trail enthusiasts in Colorado have long been aware of the importance of lesser known trails running along the piedmont of the Rocky Mountains, first traced by wild game, followed by Native Americans, then by intrepid European pioneers. Although the names of famous roads such as the Oregon, Mormon, Santa Fe and California Trails come easily to mind, the Overland Stage Road and in particular the Cherokee Trail have traditionally been less popular with historians outside of Colorado. However, the importance of these trails and others into and through the foothills of the Rockies is rendered none the less significant.

It is interesting to note that modern peoples' main transportation routes often trace the path of ancient peoples' primitive roads, and for generally the same reasons. In Colorado we can point to Interstate Highway I-25 as the modern counterpart of the old Cherokee and later the Overland Trails. Like the old Trails, I-25 links the southern region of the West with its northern region. In 1849 the Cherokee Trail extended the old Taos Trappers' Trail north beyond the new supply hub, Denver City, making a connection between the Santa Fe Trail in northern New Mexico and the Oregon, Mormon and California Trails in southern Wyoming.

While there are few ruts visible today, and the Overland's records were lost in the 1906 San Francisco earthquake and fires, there is tangible evidence of these trails' footprints through northern Colorado. Denver is still an important hub, and of course many smaller towns which sprang up along the trails owe their existence to the early roads. Loveland and Berthoud (berthoud), 60 miles north of Denver with a mere 6 miles between, are two of those small towns.

Although both towns had been researching trail history in their immediate areas, the **2009 OCTA convention, to be held August 18 – 22 in Loveland**, is the catalyst that has produced a two-fold outcome with the future promise of more. First, an exciting joint research effort of the Little and Big Thompson crossings has emerged that should yield much history candy, and secondly a day-long bus tour of both trails in this region. Tour D, Loveland – Berthoud: Trails Across the Thompson Valleys, promises to be informative and enjoyable for all.

The Berthoud section of the tour begins with an overlook that offers a view of 20 miles of the mile-wide trail corridor, the view that travelers relied upon to get their bearings as they left Denver City behind and made their way north to Wyoming.

Research has revealed the site of an 1850 camp site on the Cherokee Trail southwest of Berthoud. The Cherokee hugged the foothills while the later Overland route ran parallel about a mile east. Early Berthoud residents honored the pioneers who came before them with a memorial along the trail, which was later removed to a town park due to a state highway widening project. A first person interpretation of the teacher whose students spearheaded the relocation will be given at the park. The Overland Mail Western Division Superintendent built a stone home that is still occupied on the Little Thompson River south of Berthoud, and his influence insured his friend Mariano Medina's crossing on the Big Thompson, 6 miles north and west of present-day Loveland, would become a Home Station. The Loveland and Berthoud Historical Societies are gratified to revive the trail connection between the two stations as they work to preserve the history.

The bus tour traverses an original concrete portion of the Colorado branch of the Lincoln Highway between Berthoud and Loveland, the nation's first transcontinental auto road of 1917. Loveland stops of course include Mariano Medina's Crossing on the Big Thompson River where the lay of the land necessitated the trails merge. Mariano's settlement was the first permanent one in the valley, which at its height grew to about 100 souls, some of whom were former mountain men and their Indian wives, as was Mariano. Recent research has shed new light on the story of this man and his settlement, and will be the subject of a presentation given to the OCTA convention on August 21. It has also spawned a preservation movement of the remaining few acres of the complex that have for some reason escaped development the last 151 years. The Medina family cemetery preservation efforts are currently nearing fruition, thanks to a generous landowner, certainly a very happy note to local historians, and to all trail enthusiasts.

Not far from Medina's Crossing, also known as Miraval, Big Thompson and by its modern day name Namaqua, is the original site of a pioneer's grave of whom little was known, other than the inscription on the tombstone. OCTA has discovered more information about this trail-side burial and the tour will include a dedication at the relocated grave in Loveland's Lakeside Cemetery. Lakeside will also sport interpreters portraying three men important to Loveland's trail history.

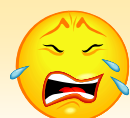
Tour D hopes to fill two tour buses each of the two days the tour is repeated. At 8AM the buses will depart from The Ranch with one beginning in Berthoud while the other tours Loveland sites. They will meet at the Loveland Museum and Gallery for a sit-down catered lunch by Antonio's Burritos, a popular Loveland Mexican food restaurant. Time will be allowed to examine a display of the Rocky Mountain Map Association's excellent and

Continued from Previous Page

comprehensive collection of antique maps. Buses will complete the day by touring the opposite leg of the route and will return to The Ranch by 4:45PM. Tour guides from both Loveland and Berthoud Historical Societies hope Trails Across the Thompson Valleys will prove to be an unforgettable convention experience for all those who participate.

On-line registration and schedule for the OCTA 2009 Convention may be found at www.octa-colorado.org. Also please visit the new Loveland Historical Society web site at www.lovelandhistorical.org and the new Berthoud Historical Society web site at www.berthoudhistoricalsociety.org

Sharon Danhauer, LHS Board, Program Chair
sdanhau@yahoo.com
970-290-0169



Emily Calhoun is departing as CAS/NCC secretary.

We thank Emily for her contributions!



Tour Fort Collins “Ghost Signs”

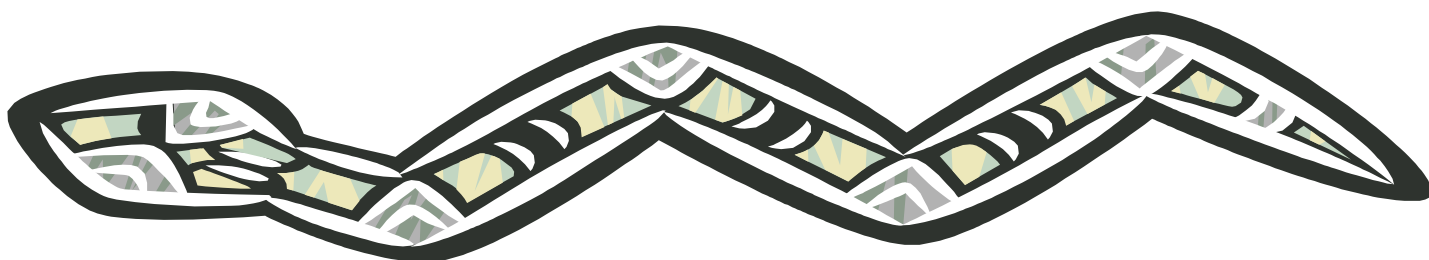
Need a “stay-cation” this summer? Consider looking for Fort Collins Ghost Signs

The City of Fort Collins Advance Planning Department is offering a 1-mile walking tour of painted building signs in downtown on **Friday, May 15, 10 am-noon** starting at the Oak Street Plaza. Reservations are required. To sign up contact Robyn Phillips (970-221-6376, rphillips@fcgov.com) . For more information see the Advance Planning Department website <http://www.fcgov.com/advanceplanning/planvan.php>. If you can't make the City tour, explore on your own using “Apparations of the Past -The Ghost Signs of Fort Collins, an Historical Context” by Adam Thomas. Find a copy at <http://www.fcgov.com/historicpreservation/projects.php> -



Join Us for Social Time Before the CAS/NCC Meeting!

All are invited to join us for dinner, appetizers, drinks (on your own tab) starting at 5:30 pm at Pappy's Corner Pub, 1027 W. Horsetooth Rd, Fort Collins. Our meetings are free and open to the public!

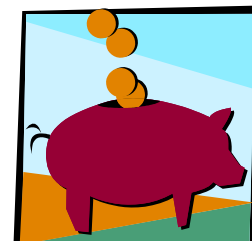


Northern Colorado Chapter/CAS Treasurer's Report

May 5, 2009

Account Balances

Checking Account	\$1,689.54
Kaplan-Hoover	
Includes: Funds	
Interperative Exhibit	\$879.08
Exhibit Cases	\$3.75
Greenacre Fund Cash	\$530.50
Savings Account	\$53.98
Scudder Money Market Fund	\$1,213.31



Total \$2,956.83

Individual Funds

General - Checking and Savings	\$330.19
Less Kaplan-Hoover Funds and GF Cash	
Greenacre Scholarship Fund	\$1,743.81
MMF + GF Cash	
Kaplan-Hoover Funds	\$882.83

Total \$2,956.83

2009 Northern Colorado Chapter/CAS Contacts

President	Bev Goering	(970) 484-3101	bgoering@comcast.net
Vice-President	Margaret Grant	(970) 482-8210	(no email address)
Treasurer / Membership	Ron Wemple	(970) 484-3317	rwemple@water-earth.com
Secretary / Librarian	VACANT		
Education	VACANT		
PAAC Coordinator	VACANT		
Field Trips	Jess Anderson	(805) 276- 0007	jessica.anderson@colostate.edu
Website / Newsletter	Joel Hurmence	(970) 481-2124	jhurmence@hotmail.com
Advisor	Dr. Jason LaBelle	(970) 491-5784	jason.labelle@colostate.edu



To Join CAS/NCC or Renew Your Membership, Visit
www.fortnet.org/casncc/membership/





Northern Colorado Chapter / Colorado Archaeological Society
Website: www.fortnet.org/casncc
E-mail: casncc@fortnet.org
Newsletter Editor: Joel Hurmence



Colorado Archaeological Society Code of Ethics

- Members will uphold State and Federal antiquities laws and regulations.
- Excavation of archaeological sites will be conducted only according to professionally accepted procedures developed in consultation with a professional archaeologist and with the written permission of the landowner. The investigator has the responsibility for publication of the results of his/her investigation and for making the collection available for further scientific study.
- Members are encouraged to report archaeological sites to the Office on the State Site Report forms. Materials collected from the surface sites shall be catalogued and described in the site survey report. Collected materials should either be deposited with the State Archaeologist's office or made available for scientific study.
- Members will not support illegal or unscientifically conducted activities by participating in or condoning the sale, exchange or purchase of artifacts obtained from such sites.
- Members who exhibit artifacts will do so in an educational context. Items from burials and objects considered sacred will not be exhibited.
- Members will cooperate with the State Archaeologist and other agencies concerned with archaeology and related fields.
- Members will respect the dignity of groups whose cultural histories are the subject of archaeological investigation.
- Members will not participate in conduct involving dishonesty, deceit, or misrepresentation about archaeological matters.

