

# The Folsom Point



Northern Colorado Chapter / Colorado Archaeological Society

## Diving in the Mouth of a Volcano

Volume 26, Issue 5

May 2011

**May 18 (Wednesday)** - No-host dinner from **6:00-7:00 pm** in the basement room of Wild Boar Coffee, 1501 S. College, Fort Collins. Program begins after a short business meeting at **7:00 pm**. Program: **Dick Hill**, retired architect and former Senior Lecturer at the School of Architecture, Kingston University, in Southwest London, will present **Diving in the Mouth of a Volcano**. He will give a slide show on archaeological diving in and amongst the Lipari Islands, near Sicily, with the University of Oxford's MARE (Maritime Archaeological Research Expedition) in 1986 and 1987. The dive site contained the remains of a Greek ship dating from approximately 200 B.C. and was at a depth of 80 to 100 feet. The only remains of the wreck were pottery plates, oil lamps and miscellaneous pottery vessels. All organic matter had long since dissolved due to the water's acidic nature. Accompanying the slide presentation, Hill will have his dive kit - suit and mask, snorkel, air bottle and regulator, ABLJ (automatic buoyancy life jacket), fins, gloves, weight belt, dive knife, etc.

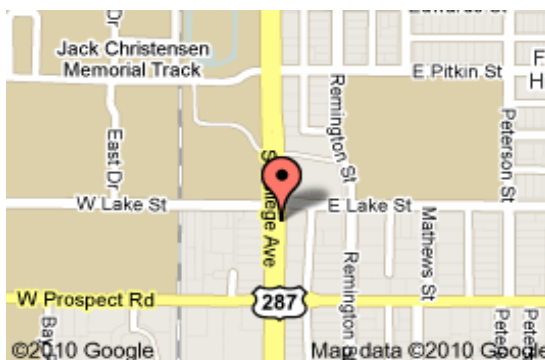
Hill will also give a foretaste of his other Italian diving off the coast of Tuscany, on an Etruscan ship site, dating from 450 B.C..

This program is **free and open to the public**. Please join us!

## Last meeting until Fall!



Photo and map courtesy of Wikipedia.



### In this issue

- 2 Contacts, Archaeology Month*
- 3 President's Message, NCC-CAS/CRAA report, Upcoming conferences*
- 4 Statewide PAAC Schedule, 4-7 Local activities*
- 7 Folsom Point guidelines*
- 8 CSU news, Volunteer opportunity*
- 9 Membership form*
- 10 Code of Ethics*

**Next Meeting: Sept 21 Next Folsom Point in early Sept.**

### Join Us for Social Time Before the CAS/NCC Meeting!

All are invited to join us for dinner, appetizers, drinks (on your own tab)\* starting **6:00 pm** downstairs at Wild Boar Coffee, Fort Collins.

Our meetings are free and open to the public!

\* Please tell the cashier you are with CAS to save us a room charge.

## 2011 Northern Colorado Chapter/CAS Contacts

<b>President</b>	Bev Goering	(970) 484-3101	bgoering@comcast.net
<b>Vice-President</b>	Margaret Grant	(970) 482-8210	(no email address)
<b>Treasurer / Membership</b>	Ron Wemple	(970) 484-3317	rwemple@gmail.com
<b>Secretary / Librarian</b>	VACANT		
<b>Education</b>	VACANT		
<b>PAAC Coordinator</b>	David Swinehart	970-397-7589 (cell)	dave@developingsolutions.biz
<b>Field Trips</b>	VACANT		
<b>Website</b>	Joel Hurmence	(970) 481-2124	jhurmence@hotmail.com
<b>Newsletter</b>	Lucy Burris		lburris@rams.colostate.edu
<b>Advisor</b>	Dr. Jason LaBelle	(970) 491-5784	jason.labelle@colostate.edu

**May is Archaeology Month, see statewide schedule:**

[http://www.historycolorado.org/archaeologists/archaeology-historic-preservation-month\\*](http://www.historycolorado.org/archaeologists/archaeology-historic-preservation-month*)

# Participate In Preservation

COLORADO ARCHAEOLOGY AND  
HISTORIC PRESERVATION MONTH MAY 2011



EXPLORE



LEARN



PROTECT

Learn how you can join in the fun!  
Visit our website [www.historycolorado.org](http://www.historycolorado.org) for more information.





## President's Message submitted by Bev Goering

Wow – it's hard to believe that May is here and this will be our last meeting and program before we break for summer. I would like to take this opportunity to thank everyone for supporting our Northern Colorado Chapter of CAS and making this another successful year.

**Lucy Burris** is doing a wonderful job as Folsom Point newsletter editor and **Joel Hurmence** continues as our web master and keeps our website current. As always, continue to send your articles to Lucy. **Margaret Grant** continues to bring us the most interesting programs and keeps us scheduled at this year's new and highly appreciated venue, Wild Boar Coffee. If you know of anyone who might be a good candidate for a program, please let Margaret know. **Dave Swinehart** has taken over as our PAAC Coordinator and has done an outstanding job of recruiting class participants. Stay tuned as we learn more about the future of the PAAC program. **Ron Wemple** has served as our treasurer for a

number of years and as always, keeps us solvent. If you haven't done so already, please send your dues to Ron. We are most fortunate to have **Dr. Jason LaBelle** as our professional advisor.

Periodically, I'm asked about our membership. To date, we have about 50 members. There are approximately 1,000+ CAS members with a total of 11 chapters throughout the state. It's certainly with the support and participation of our officers and members that we are able to function so successfully!

Enjoy your summer and we look forward to seeing you at the upcoming May 18th meeting. Also a reminder, May is Colorado Historic and Archaeology Preservation Month. Please take a minute and visit the website

<http://www.historycolorado.org> to see which events and activities might be of interest to you.

Again, thank you! **Bev Goering**, president NCC/CAS

## NCC-CAS Partners with CO Rock Art Assoc. submitted by Bev Goering

Last weekend, April 29, 30 – May 1, the Northern Colorado Chapter of CAS partnered with CRAA to host the 7th Annual Colorado Rock Art Association Symposium in Fort Collins. The symposium opened with a Friday evening pre-registration reception at the Fort Collins Museum and Discovery Science Center in Library Park. Museum Curator, Linda Moore, and an assistant, provided a special viewing of the Watt's Clovis Cache and several select trays of artifacts from the Lindenmeier Site. Saturday activities included presentations with about 50 attendees at the La Qunita Inn. An evening banquet followed, with a silent

auction, and a presentation by keynote speaker, Julie Francis, Archaeologist for the Wyoming Dept. of Transportation. The symposium wrapped up Sunday with **Dr. Jason LaBelle**, CSU Dept. of Anthropology, leading a field trip to the Bonner Springs site. Soapstone Prairie and the Lindenmeier Site Overlook were also available for a self-guided tour.

A special thank you to our members **Bev Goering, Lucy Burris, Bob and Jane Willhour, Alan and Elsie Czenkusch, Diana Wess, Steve Main and Dr. Jason LaBelle** for their contributions in making this a successful symposium.

## Upcoming Conferences

- May 20-22, **World Atlatl Open**, Saratoga, WY. <http://www.worldatlatl.org/>
- June 16-18, **2nd Biennial Conference on Archaeoastronomy of the American Southwest**, Albuquerque, NM. <http://www.caasw.org>
- June 17-19, **Wyoming Archaeological Society Summer Meeting and Atlatl Throw**, Hell Gap, WY. <http://www.wyomingarchaeology.org/home.html>
- August 11-14, **2011 Pecos Conference**, Mile-and-a-Half Lake, AZ. [http://www.swanet.org/2011\\_pecos\\_conference](http://www.swanet.org/2011_pecos_conference)
- October 6-8, **Rocky Mountain Anthropological Conference**, Missoula, MT. <http://rockymtnanthro.org/registration.htm>
- October 15-16, **Colorado Archaeological Society Annual Meeting**, Boulder, CO. <http://www.coloradoarchaeology.org/>
- October 26-29, **Plains Anthropology Conference**, Tucson, AZ. <http://www.pac69.com/>
- April 18-22, 2012, **Society for American Archaeology**, Memphis, TN. Call for paper submissions due Sept 15, 2011. <http://www.saa.org/call>

## Statewide PAAC Schedule, May - June submitted by Dave Swinehart

### May

7-8..... Colo. Springs/Fountain

Field and Lab Photography

20-22..... Glenwood Springs

Prehistoric Ceramics Description & Analysis

### June

3-5..... Craig

Prehistoric Ceramics Description & Analysis

11-12..... Grand Junction

Introduction to Archaeology, CAS, and PAAC

21-28 .....near Salida

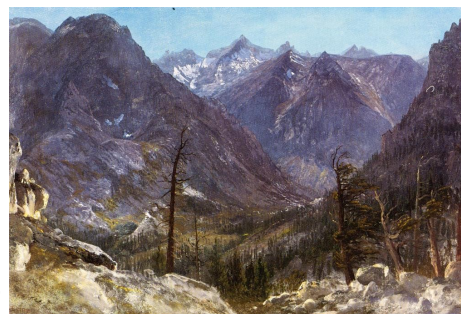
PAAC Summer Training Survey at Antelope Gulch (applications due May 13 - see April Folsom Point for details)

Course descriptions on the PAAC web site <http://www.historycolorado.org/archaeologists/paac-class-schedule>

## Local and Regional Activities compiled by Lucy Burris

- **Drylander Museum - Open for Season**  
Sat/Sun 1 - 4 pm, 755 3rd Street, Nunn, CO. Call 970 897-3125. <http://www.homestead.com/highplainshistory>
- **Centennial Village Museum - Open for Season**  
Apr 30-Sept 30, Tues-Sat, 10 am - 4 pm, 14th Avenue and A Street, Greeley, CO. <http://greeleygov.com/Museums/CentennialVillage.aspx>
- **Global Village Museum - Open at new location**  
Tue-Sat, 11 am - 5pm, 200 West Mountain, Fort Collins. Museum is intended as a place that engages and inspires visitors to learn more about other cultures- the people, their arts, history, food and living environment in order to promote understanding and peace. See their web site for volunteer opportunities. <http://globalvillagemuseum.com/>
- **Fort Collins Natural Areas Program - Discover the Ancient Peoples of Northern Colorado**  
Tues, May 3, 7:30 - 9 pm, City of Fort Collins office building, 215 North Mason, Community Room (north entrance). Learn from CSU archaeology professor **Dr. Jason LaBelle** who has conducted research at the largest and most important Paleo-Indian site in North America: the historic Lindenmeier Site at Soapstone Prairie Natural Area. Free, no registration required. <http://www.fcgov.com/naturalareas/>
- **Estes Park Museum - Speaker**  
Sat, May 7, 2 pm, 200 Fourth Street, Estes Park, CO. *Sacred Landscapes Research Project: Anthropology Lecture*. The area which is now known as Rocky Mountain National Park has been visited by Native

Americans for thousands of years. Anthropologists verified three dozen religious sites so far and are using computer modeling to predict where more might be. In August of 2010 **Dr.**



*Bierstadt image courtesy of Wikipedia Commons, [http://commons.wikimedia.org/wiki/File:Albert\\_Bierstadt\\_Estes\\_Park\\_Colorado.jpg](http://commons.wikimedia.org/wiki/File:Albert_Bierstadt_Estes_Park_Colorado.jpg)*

**Robert Bruns-**  
**wig**, Anthropology professor from the University of Northern Colorado, used a Geographic Information System (GIS) to predict where sacred sites in Rocky Mountain National Park reside and supported its finding with field research. Free.

<http://www.estesnet.com/Museum/events.html>

- **Fort Collins Natural Areas Program - Photo Hike to an Original Homestead**  
Sun, May 8, 8 am - 1 pm, Soapstone Prairie Natural Area. There will be opportunities to photograph expansive landscape, mammals, wildflowers, reptiles, windmills, and one of the original homesteads on Soapstone Prairie Natural Area. You can only visit this homestead with a guide! 6-7 miles, moderate to strenuous. Registration required. Call 970-416-2815 or go to [www.fcgov.com/webtrac](http://www.fcgov.com/webtrac) (79905-01)
- **Loveland Historical Society - Lecture**  
Mon, May 9, 7 pm, Loveland Museum, 503 N. Lincoln

## Local and Regional Activities (cont.) compiled by Lucy Burris

Ave, Loveland. *Dutch Hop: The Dance, Music and Culture of Germans from Russia*, by the Loveland Germans from Russia.

<http://www.lovelandhistorical.org/calendar.html>

- **Colorado Archaeological Society, Indian Peaks Chapter - Meeting and Speaker**

Tues, May 12, 7 pm, University of Colorado Museum, Dinosaur Room, Henderson Building, 15th and Broadway, Boulder. Craig Lee, *An Update on Ice Path Archaeology in the Mid-latitude Rocky Mountains and Colorado Front Range recent research summary*. Free and open to the public.

<http://www.indianpeaksarchaeology.org/Events03.htm>

- **Wyoming State Museum - Lecture**

Thurs, May 12, 7 pm, Barrett Building, 2301 Central Avenue, Cheyenne, WY. *The Iroquois League* by Dr. Robert Munkres, Estes Park, CO.

<http://wymuseum.state.wy.us/Events/Lecture.asp>

- **AIA - Denver Society - Public Lecture**

Sun, May 15, 2 pm, Tattered Cover Bookstore, 1668 16th St., Denver. John M. Scott, Senior Staff Archaeologist, Metcalf Archaeological Consultants, Post Graduate Research Student, University of Bristol, presents *From Trajan to 'TE': 2000 Years of Conflict Stratigraphy in Wadi Yutm, Southern Jordan*. Free and open to the public. Free street parking on Sundays.

<http://www.aiadenver.org/>

- **Colorado Archaeological Society, Denver Chapter - Meeting and Speaker**

Mon, May 16, 7 pm, Ricketson Auditorium in the Denver Museum of Nature and Science, 2001 Colorado Blvd. Michelle Slaughter, Avalon Archaeology, will speak on archaeological research at Camp Amache.

<http://www.cas-denver.org/>

- **Colorado Historical Society 2010-11 Lecture Series - Speaking of Colorado: This Land Through Time**

Tues, May 17, 1 pm and 7 pm, Scottish Rite Masonic Center, 1370 Grant St., Denver. History Colorado's Rick Manzanara, director of the Fort Garland Museum, presents different perspectives on the story of the "bloody" Espinosas. For years, members of the Espinosa family of southern Colorado killed Anglo Americans, eluding the law and dodging military pa-

trols from Fort Garland. Desperate authorities eventually turned to trapper and scout Tom Tobin to track them down; in 1863, Tobin brought in two of the murderers' heads in a sack and presented them to Fort Garland's Commandant. The family's story is a subject of continuing debate. Having killed 32 people, the Espinosas remain Colorado's most prolific serial killers. Yet in his epic poem, "I Am Joaquin," political activist Rodolfo "Corky" Gonzales refers to the Espinosas as heroes. Tickets [http://www.coloradohistory.org/programs/current\\_lectures/legends.htm](http://www.coloradohistory.org/programs/current_lectures/legends.htm)

- **Wyoming Archaeological Society - Meeting/Speaker**

Thurs, May 19, 7 pm, Health Science Building Room 120/121, Laramie County Community College, Cheyenne, WY. Mr. Orrin Koenig, Forest Service, will present *Does This Hearth Have a Home? A Hearth Centered Spatial Analysis*.

<http://www.wyomingarchaeology.org/waswaschapterinfo/cheyennechapter.html>

- **Poudre River Public Library - Lecture**

Fri, May 27, 7 - 8:30 pm, Runyan Hall, 1400 Remington St, FC. Kay Negash portrays five Colorado teachers from 1872 - 1885: Mary Adelaide Easton of Longmont, Carrie Ayres of Sterling, Nannie Blain of Grand Junction, Maud Clark of Platteville, and Blandina Segale of Trinidad.

<http://www.poudrelibraries.org/calendar/>

- **Windsor Museum at Boardwalk Park - Open for Season**

Sat, May 28 - Mon, Sept 5, Tues - Sat, 10 am - 4 pm, 6th St. and Ash St., Windsor, CO. Free admission.

<http://www.ci.windsor.co.us/index.aspx?NID=464>

- **History Colorado Trip - Overnight Trek: Picket Wire Canyon Discovery Tour and Bent's Fort**

Sat, June 4, 2 pm through Sun, June 5, 8 pm. According to legend, Spanish soldiers died in the area of the Purgatoire River while looking for glittering treasures. Without benefit of religious services, their souls were consigned to purgatory, thus naming the river. This two-day tour highlights a corner of southeastern Colorado rich in history, geology, and anthropology. Visit Picket Wire Canyon, complete with dinosaur tracks, and Bent's Fort, an outpost once revered as an oasis in



## Local and Regional Activities (cont.) compiled by Lucy Burris

the desert. We'll overnight in La Junta. This tour requires a four-wheel-drive personal vehicle. Contact us about carpooling. Reservations required by May 20. Call 303-866-4686 to reserve or for more information. Cost: \$225 general public; \$200 members. Based on double occupancy; single supplement is \$85. Price includes hotel, all interpretation and museum admission, group dinner in La Junta and lunch at Picketwire.

<http://www.historycolorado.org>

- **Poudre Landmarks Foundation - Fort Collins Waterworks Open House**  
Sat June 4, July 2, Aug. 6, Sept. 10, and Oct. 1. 10 am - 3 pm, 2005 North Overland Trail. [http://www.poudrelandmarks.com/plf\\_water\\_works.shtml](http://www.poudrelandmarks.com/plf_water_works.shtml)
- **High Plains Archaeology Museum - Open for Season**  
Early June - late Aug. Call ahead for hours. 211 Elm St., Pine Bluffs WY. Check for open periods at the nearby Windows on the Past Archaeological site at the I-80 Pine Bluffs rest stop. 307-245-9372.
- **Colorado Archaeological Society, Denver Chapter - Meeting and Speaker**  
Mon, June 13, 7 pm, Ricketson Auditorium in the Denver Museum of Nature and Science, 2001 Colorado Blvd. Lucy Hackett Brambery, head of cultural resources, Louis Berger Group, presents *With Scenery to Boot: Evaluations of Eligibility at Abandoned Mines at Five National Parks in Montana and Arizona.*  
<http://www.cas-denver.org/>
- **Fort Collins Natural Areas Program - What's So Special about Soapstone?**  
Sun, June 19, 9 am, Soapstone Prairie Natural Area north parking lot. A beautiful natural environment, archaeology, and history all combine to make Soapstone Prairie a truly unique place. 1/2 mile on paved sidewalk.



*Photo courtesy of Fort Collins Natural Areas by Karl Manderbach*

No registration required. Contact info: Deborah Price, 970-217-3075, [dprice@fcgov.com](mailto:dprice@fcgov.com).

<http://www.fcgov.com/naturalareas>

- **Estes Park Museum - Cheley Camp Tour**  
Tues, June 21, 10 am - 12 pm. Museum. Join-in for the annual tour of the historic Cheley Colorado Camp. In 1921 Frank Cheley founded Cheley Colorado Camps at Bear Lake in Rocky Mountain National Park. Just twenty-four campers attended that first year. By 1927, the camp outgrew the available space and the Cheley Colorado Camps moved to its present location off of Fish Creek Road. The camps are among the oldest in the country and continue to host more than one thousand campers annually. Visit the magnificent cabins and lodges and learn about the Cheley legacy. The tour is facilitated by the Estes Park Museum and guided by Cheley Camp staff. Reservations required (970) 586-6256. Cost \$5 per person, payable by cash or check on tour day <http://www.estesnet.com/Museum/events.html>
- **Poudre River Public Library - History Comes Alive: Harriet Beecher Stowe**  
Wed, June 22, 7 - 8:30 pm, Drake Centre, 802 W. Drake Road, Fort Collins. Harriet Beecher Stowe will be portrayed by Jan Turnquist. Ms. Turnquist is the Executive Director of the Orchard House Museum in Concord Massachusetts.  
<http://www.poudrelibraries.org/calendar/>
- **Estes Park Museum - Historic Home Tour**  
Sat, June 25, 9 am - 2 pm. Enjoy early Estes Park history at the eighth annual Historic Home Tour of various Estes Valley cabins and homes. This fund raising event is sponsored by the Estes Park Museum Friends & Foundation, Inc. Tickets cost \$20 in advance and may be purchased starting May 25 at the Estes Park Museum, 200 Fourth Street and at Macdonald Book Shop located at 152 E. Elkhorn Avenue. Tickets cost \$25 the day of the tour.  
<http://www.estesnet.com/Museum/events.html>
- **Fort Collins Natural Areas Program - History Mysteries at Bobcat Ridge**  
Sun June 26, 10 am, Bobcat Ridge Natural Area parking lot. Walk in the footsteps of Native Americans and pioneers who came before us and see structures and

## Local and Regional Activities (cont.) compiled by Lucy Burris

- evidence of the past. 2 miles, easy. No registration required. Contact info: Deborah Price, 970-217-3075, [dprice@fcgov.com](mailto:dprice@fcgov.com).  
<http://www.fcgov.com/naturalareas>
- **Fort Collins Natural Areas Program - What's So Special about Soapstone?**  
Sat, July 9, 9 am, Soapstone Prairie Natural Area north parking lot. See June 19 entry for details.  
<http://www.fcgov.com/naturalareas>
  - **Estes Park Museum - Cheley Camp Tour**  
Tues, July 19, 10 am- 12 pm. See June 21 listing for details. Reservations required (970) 586-6256. The cost \$5 per person, payable by cash or check the day of the tour. <http://www.estesnet.com/Museum/events.html>
  - **Poudre River Public Library - History Comes Alive: Benjamin Franklin**  
Fri, July 29, 7 - 8:30 pm, Student Center, Front Range Community College, 4616 S. Shields Street, FC. Ben Franklin will be portrayed by Christopher Lowell. Chris has been a teacher/actor for over 50 years. Chris uses his energy and enthusiasm to bring the extraordinary life and accomplishments of Ben Franklin to audiences across the country.  
<http://www.poudrelibraries.org/calendar/>
  - **Fort Collins Natural Areas Program - What's So Special about Soapstone?**  
Sat, July 31, 9 am, Soapstone Prairie Natural Area north parking lot. See June 19 entry for details.  
<http://www.fcgov.com/naturalareas>
  - **Estes Park Museum - Historic Sites of Rocky Mountain National Park and the Estes Valley**  
Mon, Aug 8, starts at 9 am, Meet at Museum then caravan to the various sites. A tour guided by Estes Park Historian Laureate James Pickering on the history and significance of major historic sites in Estes Park and Rocky Mountain National Park. There will be no additional fee for entrance into Rocky Mountain National Park. Cost is \$6 for members and \$12 for non-members. Registration opens July 1 by calling (970) 586-6256.  
<http://www.estesnet.com/Museum/events.html>
  - **Poudre Landmarks Foundation - Historic Home Tour**  
Sat, Sept. 10, 10 am - 4 pm. Details to be announced.  
[http://www.poudrelandmarks.com/plf\\_historic\\_homes\\_tour.shtml](http://www.poudrelandmarks.com/plf_historic_homes_tour.shtml)

## Folsom Point Submission Guidelines compiled by Lucy Burris

The Folsom Point is published monthly September through May for the purpose of sharing information with members and friends of the Colorado Archaeological Society, Northern Colorado Chapter. Submissions are welcome and are used at the editor's discretion and may be edited for content, length, and format. Common submissions include book reviews, event announcements, volunteer help requests, activity reports, and local news items. Please follow the guidelines below. Contact the editor with any questions.

- Submit materials by the 1st of the month. The newsletter is published during the first week of the month so events or activities which occur early in the month should be submitted for publication in the prior month.
- Include contact information in the form of a name, email address, web site, and/or phone number.
- Illustrations can be used but they may be reduced in size and/or resolution to reduce file size.
- Event announcements should include specific time and location information, remember not all members live in Fort Collins or even Colorado.
- Clearly distinguish your own content from that created by others so that proper credit can be given.
- Submit all material electronically. Acceptable document formats include Microsoft Word documents and plain ASCII text files, as well as plain text in the body of email. Acceptable image formats include .jpg, .tif, and .bmp. Adobe PDF files also can be used. Tables can be sent using Microsoft Excel or embedded in a Word document.

The next Folsom Point will be published in September 2011.

## Department of Anthropology receives \$1 million gift\*

A \$1 million gift to CSU's Department of Anthropology will help support better understanding of the role that Native Americans played in forming the cultural and ecological landscapes of the southern Rocky Mountains. The gift, which establishes the James and Audrey Benedict Mountain Archaeology Fund, also will help train a new generation of CSU students as archaeologists by allowing for exploration of new mountain ranges in alpine country, one of the least understood cultural environments. "As long-time friends and supporters of the Department of Anthropology, Jim and Audrey Benedict have dedicated their lives to studying how humans have continued to adapt to changing environmental conditions," said archaeology **Professor Jason LaBelle**. "This invaluable gift – the largest ever in the department – will advance geological and archaeological research in the Rocky Mountains and honor the Benedict's deep appreciation for the natural world, commitment to research, stewardship and public education."

Jim Benedict, who died on March 8, spent his life researching natural history in the alpine country. Audrey Benedict is founder and director of the Cloud Ridge Naturalist field program, which provides history education and environmentally responsible travel to some of the world's most ecologically at-risk locations.

In addition to the gift, the archaeology program has benefited from moving thousands of artifacts and research facili-

ties from off-campus areas to the newly named Center for Mountain and Plains Archaeology, which is now housed in the A-wing of the Clark Building on the Main Campus.

"This new center in the heart of campus will greatly enhance the significant research, educational opportunities and outreach of the department in pursuing mountain and plains archaeology," said Kathleen Sherman, department chair. For the past 20 years, the department had housed a large number of its artifacts and conducted research offsite in what had been named the Laboratory of Public Archaeology, Sherman said. "The new location makes this unified collection much more accessible to the students and faculty it serves. It also expands the department's collaborations with other colleagues in the department, in other colleges on campus, in other universities, and in federal, state and local resource agencies across the region," she said.

The Center for Mountain and Plains Archaeology is home to the Archaeological Repository, which retains more than 18,000 catalog items consisting of prehistoric and historic artifacts representing a fairly complete sample of the material cultures of peoples living in the Northern Colorado region over the past 12,000 years or more. The repository is assisted by seven undergraduate practicum students who help manage and catalog the artifacts.

\*From *Today @ Colorado State* 5/2/2011

## Magnetometry survey help needed submitted by Andy Creekmore

**Site location:** Windsor, about 10 minutes east of I25 (specific directions will be supplied).

**Schedule:** Plan to work ~9-6, Sunday May 8

**Work description:** Magnetometry survey. We are seeking to identify pyrotechnic features at this ca. 1000 BP mobile forager site. Volunteers will assist in laying survey grids and moving rope guides on an eroded bluff and the flat field by the river. Tasks may also include recording notes or photographs. **Due to the sensitivity of the magnetometer, participants need to wear clothing with NO**

**METAL.** That means no watches, jewelry, piercings, zippers, eyelets in shoes, wire undergarments, glasses, etc. The ridge has cactus so avoid sandals. Gym shoes are usually



Photo courtesy of Time Team America, <http://www.pbs.org/opb/timeteam/field/magnetometry.php>

metal free and strong enough to handle small cactus, but you'll need to be careful where you step. It would be a good idea to bring a metal-free hat, sunscreen, and something to eat/drink since we'll be working through the day. I will supply snacks and drinks. It could be cool or windy in the morning so I suggest layers of stuff b/c any heavy jacket will have a zipper.

**Waivers:** Since we will be working off-trail on Larimer County Open Space, all participants are required to sign a standard waiver that relinquishes their right to sue the County in case of injury. I will

provide this on-site.

**Persons interested in participating should contact Andy at: [Andy.Creekmore@colostate.edu](mailto:Andy.Creekmore@colostate.edu) by 5/5.**



## Northern Colorado Chapter Colorado Archaeological Society Membership Application

I/We \_\_\_\_\_ do hereby agree to uphold and abide by the [Code of Ethics](#) as a condition of membership in the Colorado Archaeological Society (CAS) and the Northern Colorado Chapter.

NAME(S) \_\_\_\_\_

ADDRESS \_\_\_\_\_

CITY \_\_\_\_\_ STATE \_\_\_\_\_ ZIP \_\_\_\_\_

PHONE \_\_\_\_\_ (H) \_\_\_\_\_ (W) E-MAIL \_\_\_\_\_

Membership type (check one): Today's Date: \_\_\_\_\_

☐ Renewal ☐ New Member Joining Jan-Jun ☐ New Member Joining Jul-Dec

Renewal or New Member Joining Jan-Jun	New Member Joining Jul- Dec	Category
<input type="checkbox"/> \$26.00	<input type="checkbox"/> \$13.00	Individual
<input type="checkbox"/> \$32.50	<input type="checkbox"/> \$16.25	Family
<input type="checkbox"/> \$18.00	<input type="checkbox"/> \$ 9.00	Student (includes <i>Southwestern Lore</i> , must be currently enrolled)
<input type="checkbox"/> \$18.00	<input type="checkbox"/> \$ 9.00	Senior (does <b>not</b> include <i>Southwestern Lore</i> )
<input type="checkbox"/> \$22.50	<input type="checkbox"/> \$11.25	Senior Family (does <b>not</b> include <i>Southwestern Lore</i> )

Note: Renewals are due in January each year. New members joining after June 30 pay half the annual dues for the remainder of the year.

Donation to the [Greenacre Scholarship Fund](#): \$ \_\_\_\_\_

Please make your check payable to the Northern Colorado Chapter/CAS. Print this page, fill out the application, and send with your check to:

Northern Colorado Chapter/CAS

P.O. Box 270738

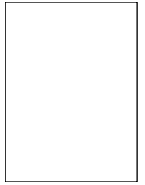
Fort Collins, CO 80527

Note: Your dues include concurrent membership in the Colorado Archaeological Society and the Northern Colorado Chapter, a subscription to the Chapter newsletter, the [Folsom Point](#), four issues of the journal *Southwestern Lore*, and four issues of the CAS newsletter, the *Surveyor*. The Colorado Archaeological Society is a nonprofit 501(c)3 organization.



**To Join CAS/NCC or Renew Your Membership,  
Use the Form Above or  
Visit [www.fortnet.org/casncc/membership/](http://www.fortnet.org/casncc/membership/)**





Northern Colorado Chapter / Colorado Archaeological Society  
Website: [www.fortnet.org/casncc](http://www.fortnet.org/casncc)  
E-mail: [casncc@fortnet.org](mailto:casncc@fortnet.org)  
Newsletter Editor: Lucy Burris



## Colorado Archaeological Society Code of Ethics

- Members will uphold State and Federal antiquities laws and regulations.
- Excavation of archaeological sites will be conducted only according to professionally accepted procedures developed in consultation with a professional archaeologist and with the written permission of the landowner. The investigator has the responsibility for publication of the results of his/her investigation and for making the collection available for further scientific study.
- Members are encouraged to report archaeological sites to the Office on the State Site Report forms. Materials collected from the surface sites shall be catalogued and described in the site survey report. Collected materials should either be deposited with the State Archaeologist's office or made available for scientific study.
- Members will not support illegal or unscientifically conducted activities by participating in or condoning the sale, exchange or purchase of artifacts obtained from such sites.
- Members who exhibit artifacts will do so in an educational context. Items from burials and objects considered sacred will not be exhibited.
- Members will cooperate with the State Archaeologist and other agencies concerned with archaeology and related fields.
- Members will respect the dignity of groups whose cultural histories are the subject of archaeological investigation.
- Members will not participate in conduct involving dishonesty, deceit, or misrepresentation about archaeological matters.